

---

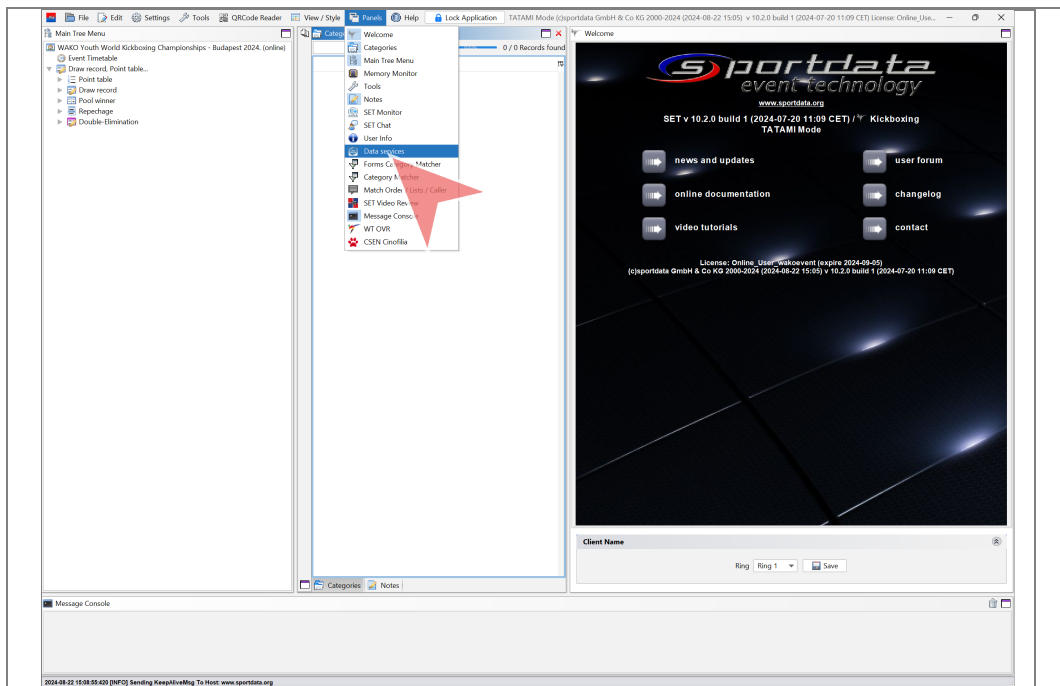
# Setup V-Scoring Clicker system

Oscar Morant

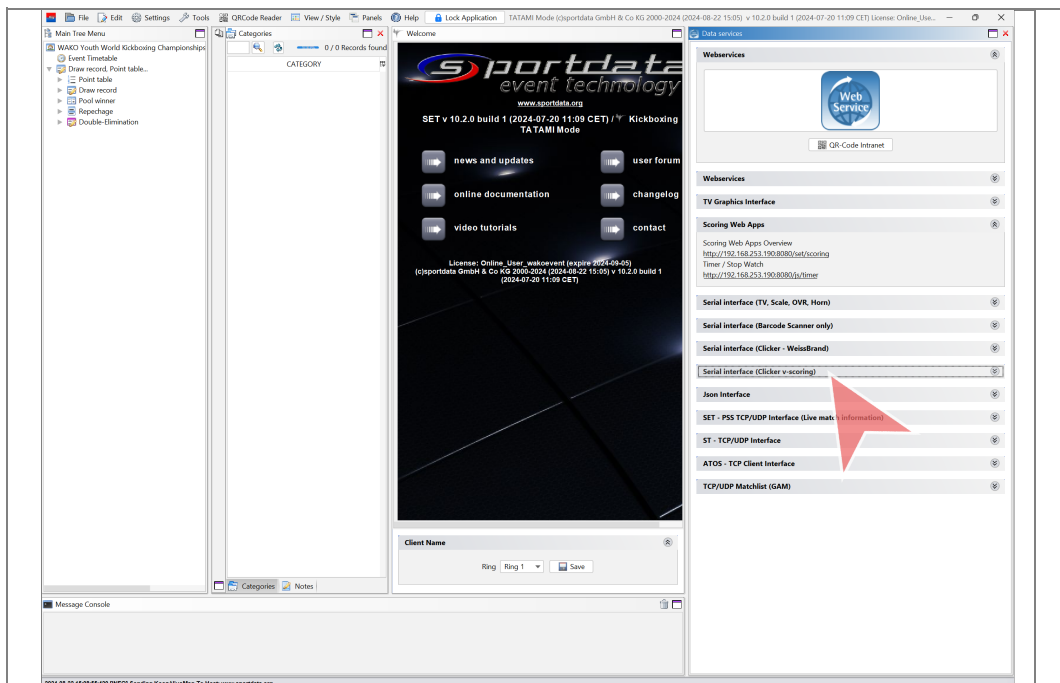
V-Scoring

---

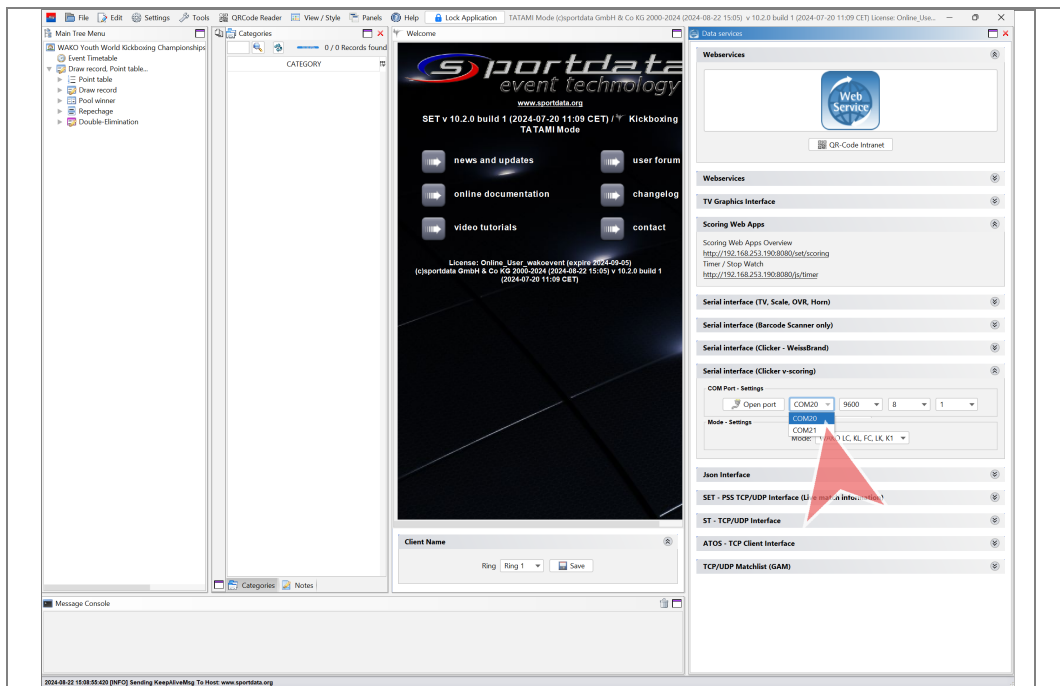
# V-SCORING



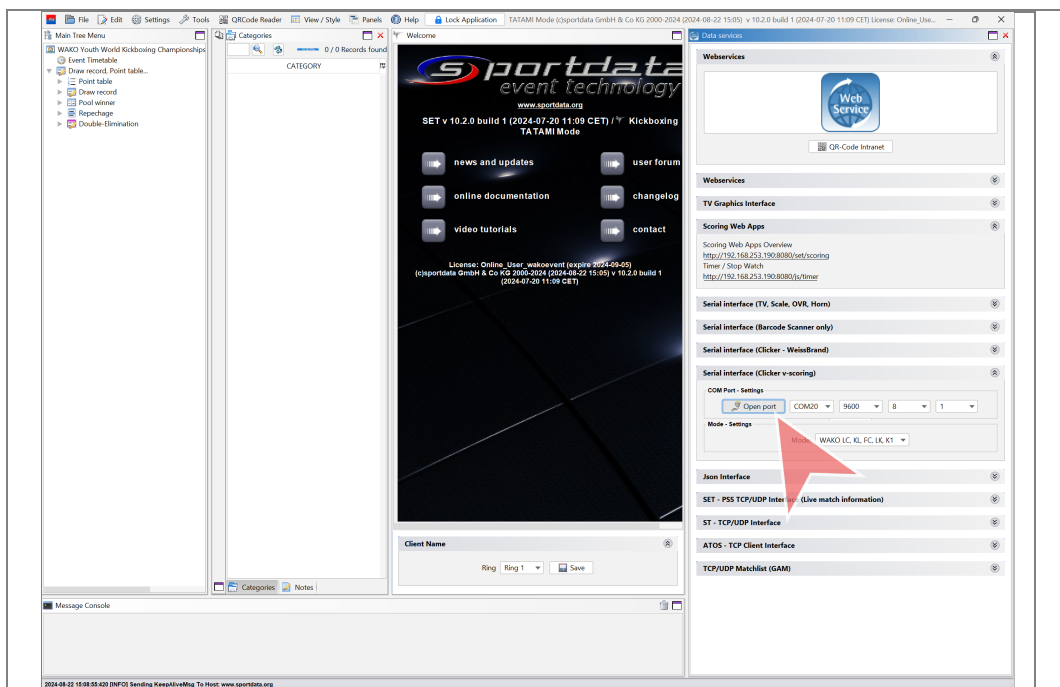
1. Click in "Panels > Data Services".



2. Expand the menu "Clicker V-scoring".

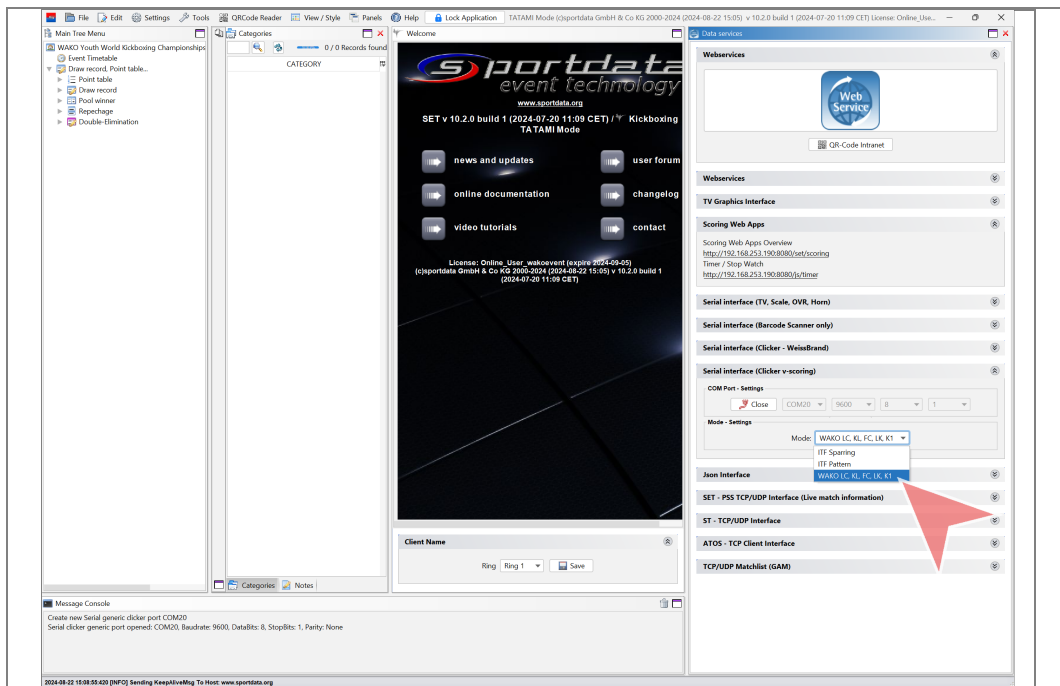


3.  
Select the correct port.  
Baud rate 9600;8;1



4.  
Click "Open port".

# V-SCORING



5.

Make sure to have selected WAKO LC, KL, FC, LK, K1 mode.  
You are ready to use V-scoring!